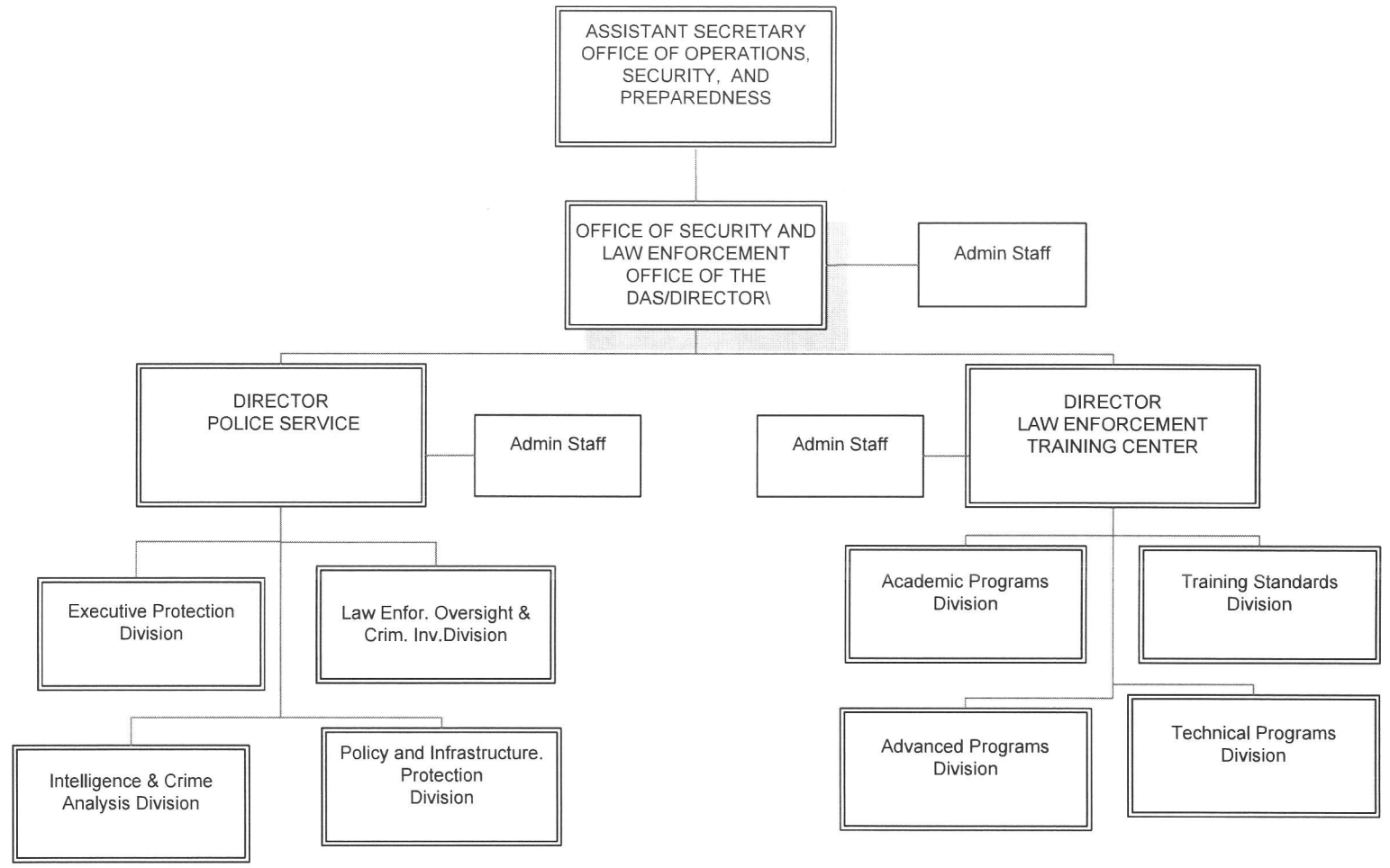


#4



12 / 2011



01/06/2010

# Office of Security and Law Enforcement

#4

## Office of the DAS/Director

Director  
Program Analyst  
Administrative Officer  
Program Support Assistant

5use b6

### Police Service

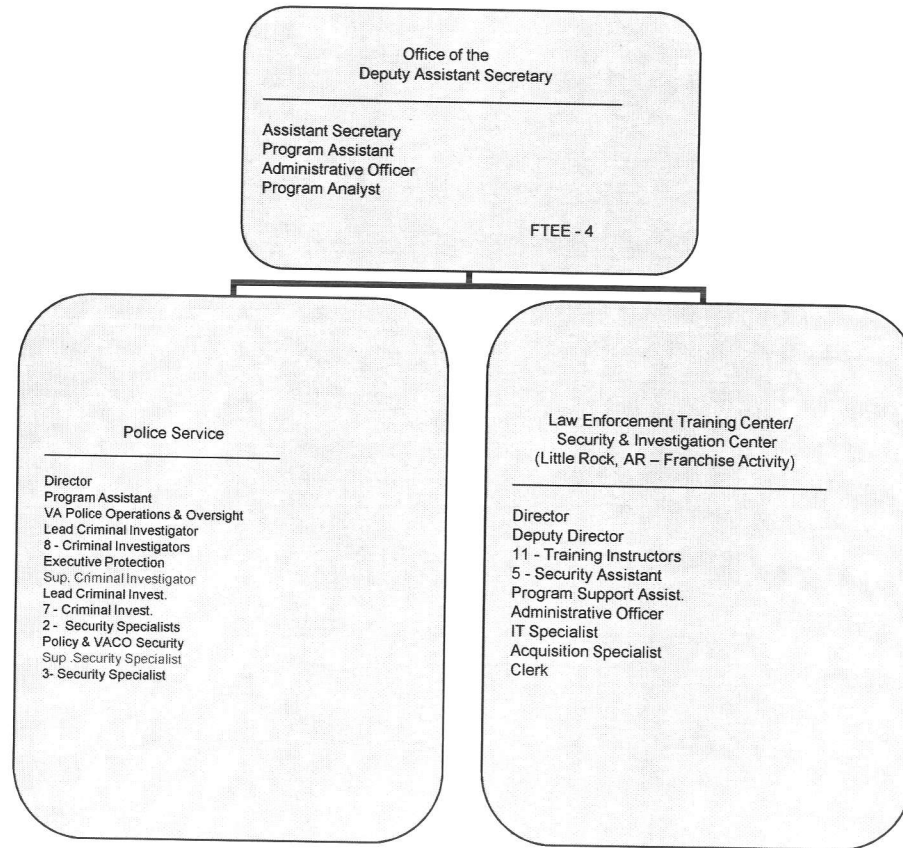
**Director**  
Program Support Assistant  
**VA Police Operations & Oversight**  
Criminal Invest (Team Lead)  
8 - Criminal Invest  
**Executive Protection**  
Criminal Invest  
7- Criminal Invest  
2 Security Specialists  
1 Motor Vehicle Operator  
**Policy & VACO Security**  
Sup Security Specialist  
4 Security Specialist

### Law Enforcement Training Center and Security and Investigations Center

**Director**  
Training Specialist/Deputy Director  
Training Instructor  
**Law Enforcement Center**  
12-Training Instructor  
Administrative Officer  
IT Specialist  
2 - Office Automation Clerk  
1 Security Specialist (Vacant)  
**Security Investigations Center**  
3 - Security Specialist  
1 Purchasing Agent  
1 Program Support Assistant

#4

# Organizational Chart Office of Security & Law Enforcement



3/13/09